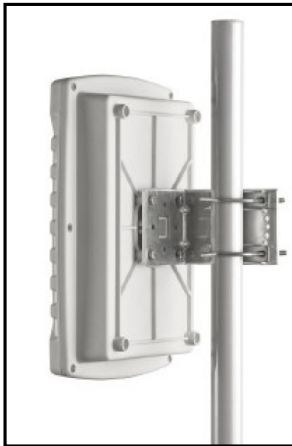




# Dual Polarized 5GHz BridgePoynt

Operating Frequency - 5.15-6GHz

Product code: WLAN-A0043



This product (WLAN-A0043) is an outdoor enclosure with integrated 5GHz, dual polarized antennas (two integrated antennas: one vertically polarized and one horizontally polarized both with the same gain).

It also features a waterproof ethernet gland with an integrated RJ45 connector for direct clip-on and clip-off of your ethernet cable without having to open the enclosure. Six movable posts with self tapping screws and double-sided tape are provided to mount your electronics and a mast mounting bracket with elevation tilt and azimuth adjustment is also included.

For protection from surges and static buildup, the product features a grounding lug to ground internally mounted electronics to the mounting structure if desired and the internal antenna antennas are both DC shorted.

#### Features:

- Integrated dual polarised 5GHz antennas with DC short
- External grounding lug
- Waterproof RJ45 gland

#### Application areas:

- 5 GHz CPE applications (WiFi/Wimax)
- Long range point-to-point links using dual radio technology



**Specifications:**

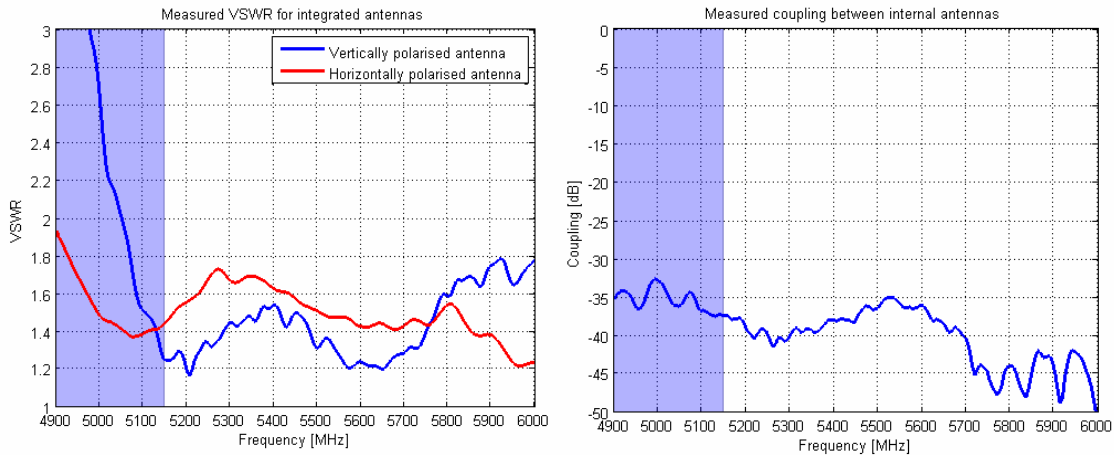
**Product Code:** WLAN-A0043  
**WLAN-A0043** Dual internal antennas with SMA(f) connector

**Electrical:**  
Gain (max) 20 dBi (+/-0.5 dB)  
Gain (min over the band) 18 dBi (+/-0.5 dB)  
Frequency 5150 – 6000 MHz  
VSWR < 2.0:1  
Feed power handling 10 W  
Elevation 3 dB beamwidth 14° (± 1°)  
Azimuth 3 dB beamwidth 10° (± 1°)  
Mutual isolation >35 dB  
Front to back (F/B ratio) >20 dB  
Nominal input impedance 50 Ohm  
Polarisation Dual antennas linear (Vertical & Horizontal)

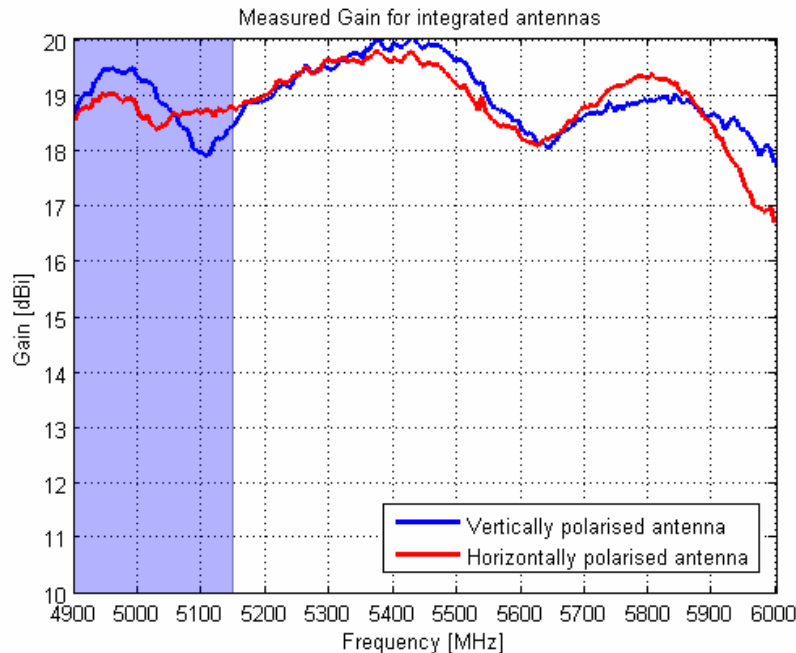
**Environmental:**  
Wind Loading 160 km/h  
Temperature Range - 20° C to +70° C  
Shock 40G at 10 msec  
Thermal Shock - 20° C to +70° C : 10 cycles  
Water Ingress Rating IP65 (NEMA 4X)

**Mechanical:**  
Dimensions (l x w x d) 364 mm x 258 mm x 98 mm  
Weight 2.44 kg  
Colour Pantone Cool Grey 1C  
Mounting Stainless steel brackets for up to 50 mm poles

**VSWR and Isolation**



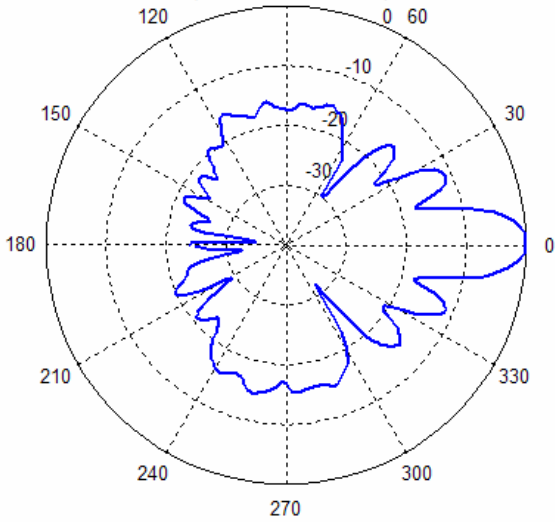
**Gain**



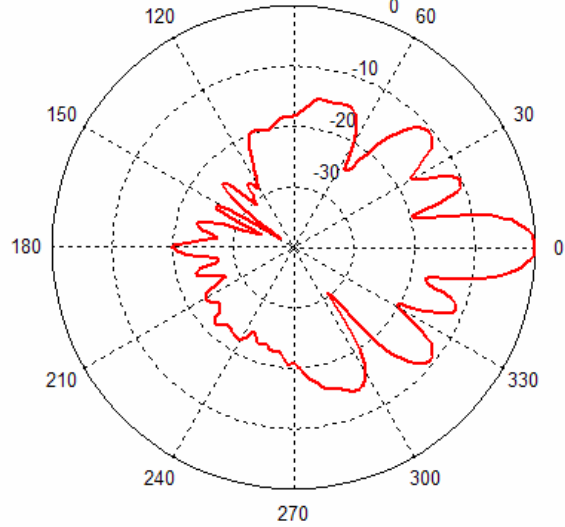


**Radiation patterns**

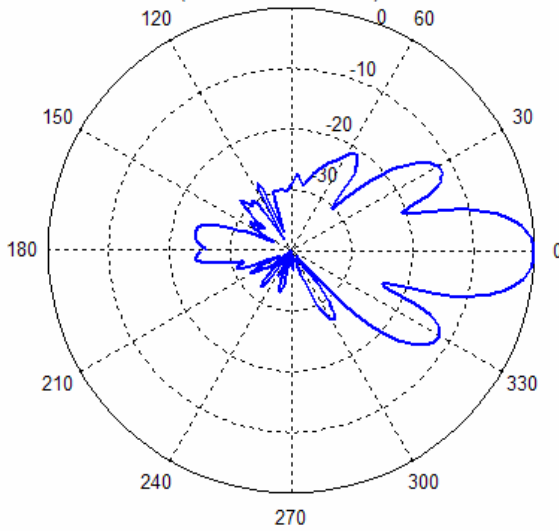
Azimuth (H-Plane) gain pattern of vertically polarised antenna (normalised at 5.5GHz)



Azimuth (E-Plane) gain pattern of horizontally polarised antenna (normalised at 5.5GHz)



Elevation (E-Plane) gain pattern of vertically polarised antenna (normalised at 5.5GHz)



Elevation (H-Plane) gain pattern of horizontally polarised antenna (normalised at 5.5GHz)

